

The background of the cover is a photograph of a Gothic-style building facade, featuring large arched windows and intricate stone tracery. The entire image is overlaid with a semi-transparent dark red filter. In the top left corner, the FSU logo is displayed in a gold-colored serif font. To its right, the text 'COLLEGE OF FINE ARTS' is written in a smaller, gold-colored sans-serif font. A vertical gold bar is positioned to the left of the main title. The main title 'STUDENT HANDBOOK' is centered in a large, bold, white sans-serif font. Below it, the academic year '2024-2025' is written in a slightly smaller, white sans-serif font.

FSU

**COLLEGE OF
FINE ARTS**

STUDENT HANDBOOK

2024-2025

CONTENTS



2	WELCOME MESSAGE	23	ADVISING & STUDENT SUPPORT SERVICES
3	MISSION & VISION	24	ACADEMIC ADVISING & SUPPORT
4	HISTORY OF THE COLLEGE	25	CAREER SERVICES
6	DEAN'S OFFICE & ADMINISTRATION	26	COUNSELING & WELLNESS
7	COLLEGE UNITS	27	CAMPUS RECREATION
8	FACILITIES & RESOURCES	27	ACCESSIBILITY SERVICES
8	CAMPUSES	27	STUDENTS FIRST INFORMATION CENTER
9	BUILDINGS	28	STUDENT ORGANIZATIONS & ACTIVITIES
10	MUSEUMS & GALLERIES	29	GETTING STARTED AT FSU
12	PERFORMANCE SPACES	30	CONTACT INFORMATION
13	STUDIO SPACES		
13	LIBRARIES		
14	ACADEMIC CALENDAR		
15	POLICIES & PROCEDURES		
16	ACADEMIC PERFORMANCE EXPECTATIONS		
17	PROFESSIONAL CONDUCT POLICY		
19	ACADEMIC INTEGRITY POLICY		
19	INCOMPLETE POLICY		
20	GRADE APPEAL PROCESS		
21	ACADEMIC GRIEVANCE PROCESS		
22	FSU REPORTING SYSTEMS		

DEAR STUDENTS,



WELCOME TO THE COLLEGE OF FINE ARTS AT FLORIDA STATE UNIVERSITY!

We are so excited to extend a warm greeting to all of you, both new and returning. You are now part of a vibrant community where creativity, passion, and dedication are celebrated and nurtured.

Our college is a dynamic and inspiring environment where the arts truly come alive. We are proud to offer a wide array of distinguished programs in Art, Art Education, Art History, Dance, Interior Architecture & Design, and Theatre. Each program is designed to provide an immersive and comprehensive education that not only hones your skills and talents but also prepares you to be innovative leaders and impactful contributors in your chosen fields.

At the College of Fine Arts, we are committed to fostering a supportive and inclusive community where every individual can achieve their fullest potential. We believe in the transformative power of the arts and the critical role they play in enriching our society. Our dedicated faculty and staff are here to guide, mentor, and inspire you throughout your academic journey, ensuring you have the resources and opportunities needed to succeed.

Whether you are embarking on your undergraduate studies, pursuing advanced graduate research, or engaging in our diverse artistic and cultural events, you are an integral part of our collective mission. Together, we will explore innovative ideas, push the boundaries of creativity, and strive for excellence in all our endeavors.

As you navigate through this handbook, you will find essential information and resources to help you make the most of your time here. I encourage you to take full advantage of the myriad opportunities available to you. Engage in interdisciplinary collaborations, participate in our vibrant community, and immerse yourself in the rich learning experiences that define our college.

Thank you for being a part of the College of Fine Arts family. We look forward to witnessing your growth, achievements, and contributions to our dynamic and inspiring community.

WITH BEST WISHES FOR A SUCCESSFUL AND INSPIRING YEAR!

MISSION & VISION

The College of Fine Arts at Florida State University is dedicated to fostering artistic excellence, creative exploration, and scholarly inquiry across diverse disciplines. Our renowned faculty and staff educate and empower you to become visionary performers, artists, educators, art historians, designers, curators, art therapists, researchers, and arts administrators who shape the future of the visual arts, healing arts, performing arts, and design. Through passionate teaching, community engagement, innovative research, and artistic practice we enrich lives, elevate artistic expression, and inspire positive change and well-being in society. Robust research, teaching, and practice in arts and design enrich our entire community, nurture innovation, and advance Florida State University's mission. We believe that design and the visual and performing arts serve as catalysts for innovation and communication, building community, enhancing health and wellness, and shaping the way we experience, create, and represent the world. We promote embodied learning through engagement with the arts in performance, inquiry, education, healing, and design. Our graduates are positioned to be leaders in their fields and inspire creativity, empathy, and critical thinking in the world they shape. While individual, all the dynamic units that make up our college share a set of core values:



ARTISTIC EXCELLENCE

We uphold the highest standards of artistic and academic excellence, nurturing creativity, wellness, innovation, and artistic integrity in all disciplines.

RESEARCH AND SCHOLARSHIP

We embrace rigorous research, artistic practice, critical inquiry, and scholarly engagement to advance knowledge and innovation in the arts and design disciplines.

COLLABORATION

We promote a collaborative and inclusive community that values diversity and fosters interdisciplinary exchange, supporting the interconnectedness of the disciplines within the College of Fine Arts and beyond.

STUDENT-CENTERED EDUCATION

We prioritize student success, providing individualized support, mentorship, and transformative learning experiences.

COMMUNITY IMPACT

We actively engage with local and global communities through our arts and design research and practice to catalyze positive social, cultural, and economic change.



HISTORY OF THE COLLEGE

The College of Fine Arts at Florida State University has a storied history deeply intertwined with the university's evolution and the broader landscape of arts education. Established in the 1800s as the West Florida Seminary, the institution's commitment to the arts was evident from its inception. Over the years, as the university underwent several transformations, the arts remained a core component of its identity.

In the early 1900s, as the institution evolved into the first liberal arts college in the state and later the Florida State College for Women, art education expanded significantly. Courses in oil painting, watercolor, pencil drawing, crayon drawing, and decorative arts were offered, laying the foundation for what would become robust programs in art, design, and art history. The post-World War II era brought significant changes, with the Florida State College for Women transitioning to co-educational status and becoming The Florida State University in 1947. This transformation welcomed men back to campus and ushered in a new era of growth and innovation in the arts.

Throughout the 20th century, the College of Fine Arts continued to expand and refine its offerings. In 1968, the Asolo Conservatory for Actor Training was established, solidifying the university's commitment to excellence in theatre arts. The 1970s saw the establishment of the Department of Dance as a separate entity, emphasizing modern choreography and expression. In 1973, the School of Visual Arts was created, merging existing components in arts and sciences, education, and elsewhere. This marked a significant milestone in the university's commitment to providing students with a comprehensive arts education. Over the years, the School of Visual Arts evolved into the College of Visual Arts, Theatre & Dance, and finally, in 2015, into the College of Fine Arts.



Today, the College of Fine Arts is a vibrant hub of creativity and artistic expression. It offers degree programs in Art, Art Education, Art History, Dance, Interior Architecture & Design, and Theatre, each of which is highly respected in its field. The college also houses several non-academic units, including the Museum of Fine Arts, the Facility for Arts Research, the Maggie Allesee National Center for Choreography (MANCC), and Asolo Conservatory for Actor Training. The College of Fine Arts continues to uphold its legacy of excellence in arts education, providing students with a dynamic and inspiring environment in which to develop their talents and pursue their artistic passions. Through its programs, partnerships, and commitment to innovation, the college remains at the forefront of arts education, preparing students to become the next generation of creative leaders.



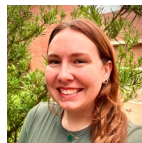
DEAN'S OFFICE & ADMINISTRATION

The CFA administrative team is dedicated to ensuring the smooth operation of the college and supporting the academic and artistic endeavors of our students, faculty, and staff. The leadership team, under the guidance of the Dean, works collaboratively to foster an environment that promotes excellence in the arts. Our team is committed to creating a supportive and inclusive community that encourages innovation, critical thinking, and creative expression. The Dean's Office is the central hub for the college's administrative and academic functions. The Dean, along with the Associate and Assistant Deans, provides strategic direction, oversees academic programs, and ensures that the college maintains high standards of excellence. The Dean's office is currently made up of the following roles:



DR. JAMES FRAZIER
DEAN

The Dean is the chief academic and administrative officer of the College of Fine Arts, responsible for providing visionary leadership and ensuring the college's growth and success.



TORI COLE
ASSISTANT DIRECTOR OF ADMINISTRATIVE SERVICES

The Director of Administrative Services manages the college's financial operations, human resources, and facilities.



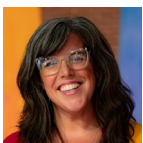
DR. MICHAEL CARRASCO
ASSOCIATE DEAN FOR RESEARCH

The Associate Dean for Research oversees the development and implementation of research initiatives, fosters interdisciplinary collaborations, and supports faculty and student research endeavors within the College of Fine Arts.



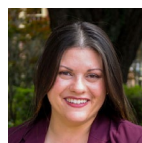
EDDIE PAGE
DIRECTOR OF STUDENT SERVICES

The Director of Student Services oversees academic and student services for the departments of Art, Art Education, Art History, Dance, Theatre, and Interior Architecture & Design.



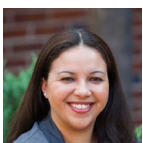
DR. SARA SCOTT SHIELDS
ASSOCIATE DEAN FOR ACADEMIC AFFAIRS

The Associate Dean for Academic Affairs focuses on curriculum development, academic policies, and student success initiatives.



CRISTI SORENSON
DIRECTOR OF STUDENT SUCCESS

The Director of Student Success oversees student support services, including advising, wellness services, new student orientation, career services, and student organizations.



RACHEL COLLINS,
ASSISTANT DEAN FOR FINANCE AND OPERATIONS

The Assistant Dean for Finance and Operations manages the college's financial planning and budgeting, oversees operational functions, and ensures the efficient use of resources to support the college's academic and artistic mission.

For any questions or assistance from the Dean's Office, please drop by The Facility for Arts Research building. Our office hours are Monday - Friday, 8am-5pm. You can also contact us via email at CFA-Contact@fsu.edu



COLLEGE UNITS

In the CFA, we have a range of diverse and dynamic units that make up our college. These include the Department of Art, the Department of Art Education (with concentrations in Art Therapy, Arts Administration, Museum Education, and Art Education), the Department of Art History, the School of Dance, the Department of Interior Architecture & Design, the School of Theatre, the Asolo Conservatory for Actor Training, the Maggie Allesee National Center for Choreography (MANCC), the Museum of Fine Arts (MoFA), and the Facility for Arts Research (FAR).

Each of these units plays a unique role in shaping the academic and artistic landscape of our college. From fostering creativity and critical thinking to providing hands-on training and research opportunities, our units provide you with a comprehensive and enriching educational experience. All our units are designed to encourage interdisciplinary learning and collaboration, allowing you to engage with peers and faculty across different artistic disciplines. This approach not only broadens your perspective but also enhances your ability to innovate and excel in your chosen field. To discover the opportunities that await you and take the first step toward achieving your academic and artistic goals, we invite you to explore detailed information about each unit on our website, cfa.fsu.edu.

FACILITIES & RESOURCES

CAMPUSES

The College of Fine Arts at Florida State University is proud to offer a diverse and dynamic learning environment across multiple campuses. With locations in Tallahassee, Panama City, and Sarasota, our college provides students with unique opportunities to engage with the arts in vibrant communities. Each campus offers its own distinct character and resources, providing students with a rich and varied educational experience.



TALLAHASSEE

Most of The College of Fine Arts is on the main campus of Florida State University in Tallahassee, Florida. Situated in the heart of Florida's capital city, the campus offers a vibrant and dynamic environment for students pursuing degrees in the fine arts. Surrounded by lush greenery and historic buildings, the College of Fine Arts campus provides a picturesque setting for creativity and artistic exploration. With state-of-the-art facilities and a rich cultural scene, the campus offers a truly inspiring backdrop for you to hone your craft and pursue your passion for the arts.

SARASOTA

Sarasota is home to The FSU/Asolo Conservatory for Actor Training, a three-year graduate program culminating in a Master of Fine Arts degree. Only twelve students are chosen each year from the thousands who audition nationwide to work in a program that combines rigorous classroom training with guest artist workshops and professional production experience. Sarasota also houses The John & Mable Ringling Museum of Art (The Ringling). In partnership with the College of Fine Arts, the The Ringling offers students the opportunity to gain hands-on experience in an outstanding museum environment. Currently, students in Studio Art, Interior Architecture & Design, Museum Education, and Art History have specialized experiences located at The Ringling.

PANAMA CITY

The College of Fine Arts offers online courses at FSU's Panama City location, providing students with the flexibility to take coursework from anywhere. While currently focusing on online offerings, the Panama City location provides a gateway to the fine arts programs at Florida State University, catering to students seeking a comprehensive education in a convenient and accessible format.

BUILDINGS



FINE ARTS BUILDING (FAB)

The Fine Arts Building (FAB) houses the main art offices as well as numerous undergraduate classrooms and specialized labs for Foundations, Photography, Ceramics, Sculpture, and Moving Image and Electronic Art. It is home to the Department of Art, Museum of Fine Arts, School of Theatre, and the Fallon Theatre.



FACILITY FOR ARTS RESEARCH (FAR)

The Facility for Arts Research (FAR) at Florida State University is an innovative venture by the College of Fine Arts, dedicated to fostering interdisciplinary art-making and research. FAR provides an environment rich with specialized equipment and space, supporting experimental endeavors in printmaking, spatial audio, electronics, and digital fabrication. This state-of-the-art facility is designed to support rigorous artistic investigation and collaboration among researchers and faculty.

In addition to its cutting-edge resources, FAR houses the Dean's Office and the college staff, serving as the administrative and academic hub of the College of Fine Arts. This centralization of resources and administrative functions within FAR ensures a cohesive and supportive environment for both artistic and academic pursuits.



CARNAGHI ARTS BUILDING (CAB)

The Carnaghi Arts Building (CAB) accommodates studio space for several departments in the College of Fine Arts, including the Department of Art, the Department of Interior Architecture & Design, and the School of Theatre. This 114,000+ square foot space provides a unique and collaborative learning environment for students in all art disciplines.

BUILDINGS



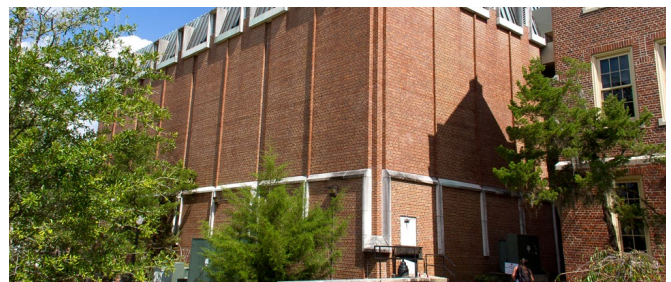
MONTGOMERY HALL (MON)

Renovated in 2004, Montgomery Hall (MON) is one of the finest dance facilities in the country. It includes 6 dance studios, a fully equipped 374 seat proscenium theatre, black box studio/theatre, locker and dressing rooms, movement training lab, audio lab, computer lab, media lab, costume shop, tech studio, technology enhanced classrooms, offices, and conference rooms. It is also home to the Maggie Allesee National Center for Choreography (MANCC).



WILLIAM JOHNSTON BUILDING (WJB)

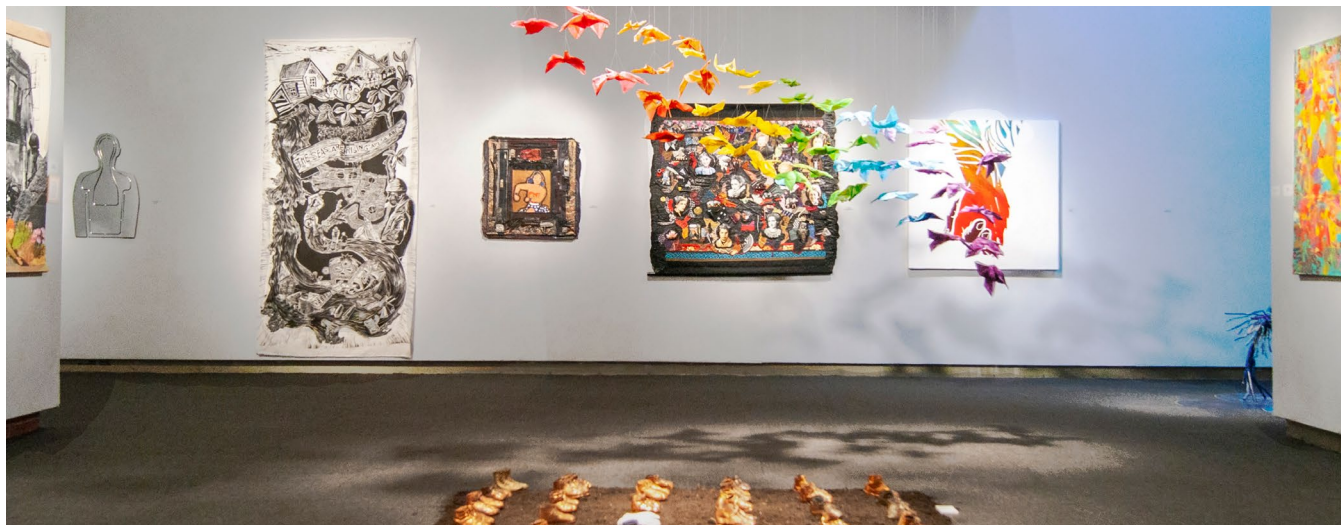
The William Johnston Building (WJB) is home to the Departments of Interior Architecture & Design, Art Education, Art History and the College of Fine Art's Art & Design library and WJB Gallery. It holds classrooms, studios, critique spaces and computer labs, most available with 24/7 swipe access for majors.



KELLOGG RESEARCH BUILDING (KRB)

The Kellogg Research Building (KRB) houses the Printmaking and Book Arts Area and some college staff offices.

MUSEUMS & GALLERIES



FLORIDA STATE UNIVERSITY MUSEUM OF FINE ARTS (MoFA)

The Florida State University Museum of Fine Arts (MoFA) enriches the university and the community by exhibiting works of art from past and present, serving as a forum for teaching and learning. MoFA provides opportunities for hands-on learning and participation in exhibitions, collaborates with faculty and students on artistic and scholarly projects, and hosts free educational programs regularly. MoFA also oversees the William Johnston Building Gallery, providing exhibition space for student work.



THE JOHN AND MABLE RINGLING MUSEUM OF ART

Florida State University owns the Ringling estate in Sarasota, which includes the John and Mable Ringling Museum of Art. The museum houses the Ringlings' private collection of Old Masters' paintings and sculptures, along with an extensive Asian art collection. The estate also includes the Ca' d'Zan mansion, the Circus Museum, the Historic Asolo Theatre, and the FSU Performing Arts Center. While administratively under the Provost's office, the College of Fine Arts maintains a close relationship with the Ringling complex, fostering interdisciplinary collaborations and student learning opportunities.



WILLIAM JOHNSTON BUILDING GALLERY

MoFA also oversees and supports the William Johnston Building Gallery (WJB Gallery), a 1100-square-foot exhibition space shared and managed by the departments inside the College of Fine Arts. The WJB Gallery provides a space for exhibitions curated by or displaying works created by students of the College of Fine Arts, offering rich natural lighting and secure public exposure for various exhibitions.



WORKING METHOD CONTEMPORARY GALLERY

Working Method Contemporary, space, located in the Carnaghi Arts Building, that is dedicated to Master of Fine Art Students at Florida State University. The gallery provides a space for approximately thirty graduate students pursuing a terminal degree in Studio Art to exhibit, experiment, and document their works. It operates as an alternative, non-traditional space highlighting recent works and collaborations by students. Gallery exhibitions are open to the public, and feature a variety of media including painting, sculpture, photography, ceramics, video works, installations, and performance art. Run by student volunteers, Working Method Contemporary offers a platform for students to engage with the broader art world.



FINE ARTS BUILDING GALLERY

The FAB Gallery, located on the 2nd floor of the Fine Arts Building on the main FSU campus, expands exhibition opportunities for staff, faculty members, and students in the Department of Art. It serves as an educational tool for critical inquiry and experimentation within the department, sharing its pedagogy with the broader community. Embracing experimentation and various media, the FAB Gallery showcases the creative and educational processes foundational to the Department of Art.



PHYLLIS STRAUS GALLERY

The Phyllis Straus Gallery, located in the Carnaghi Arts Building, provides a space for students to engage in visual cultures, innovation, experimentation, and expression through contemporary art exhibitions and events. BFA students can submit their work for juried and group exhibitions, as well as solo showcases. Accepted works are displayed with accompanying publication and press. The gallery also hosts events for artists, poets, musicians, and creative individuals, emphasizing community, openness, collaboration, and creative inquiry.

PERFORMANCE SPACES



FALLON THEATRE

In the Fine Arts Building at the corner of Call and Copeland Streets, The Richard G. Fallon Theatre is the School of Theatre's largest performance space with seating for over 488. This traditional proscenium theatre, named for Dean Emeritus Richard G. Fallon, recently underwent renovations to its electrical, power, and lighting systems which now provide the support for intelligent lighting systems, new projection systems, and more. Hosting over 150 productions since it opened its doors in 1970, the Richard G. Fallon Theatre has been voted *Tallahassee's Best Place to See a Play* for the past seven consecutive years.

FINE ARTS ANNEX (FAA)

On the corner of Call and Copeland Streets, The Fine Arts Annex is a classroom/rehearsal space and performance venue for independent student-produced works.

AUGUSTA CONRADI STUDIO THEATRE

The Augusta Conradi Studio Theatre is a 189-seat proscenium stage and the oldest on campus. Established in 1931, the Augusta Conradi Studio Theatre is named for the wife of former FSU president Edward Conradi. Closed in 1998 as part of the university's renovations of the Williams Building, the Augusta Conradi Studio Theatre reopened in 2001 at a rededication ceremony during FSU's celebration of its sesquicentennial. It is in the Williams Building, near the intersection of Jefferson and Copeland Streets.

LAB THEATRE

On Copeland Street between St. Augustine and Lafayette Streets, The Lab Theatre is a three-quarters thrust stage with a seating capacity for 150 theatre patrons. Established in 1987 as a performing venue for the School of Theatre, the Lab Theatre provides a unique and intimate theatre experience. The Lab Theatre recently underwent renovations to upgrade the lighting and power distribution systems, and the air conditioning system.



NANCY SMITH FICHTER DANCE THEATRE

The Nancy Smith Fichter Dance Theatre is a state-of-the-art performance space designed to enhance the experience of dance performances. With a seating capacity of 374, the theatre offers a spacious and intimate setting for audiences to enjoy. The lit dance space measures 35 feet by 29 feet, providing ample room for performers to showcase their talents. Students have opportunities to both perform in Days of Dance, Evening of Dance, and MFA works as well as create choreographic works to be shown on this proscenium stage. In addition, students can see the works of national and international artists brought to campus by Opening Nights.

BLACK BOX STUDIO / THEATRE

The Black Box Studio/Theatre is a versatile and dynamic space designed to accommodate various performances and productions. With dimensions of 64 feet by 59 feet, the studio offers a spacious environment for creative exploration. The space features black velour and muslin drapery surrounds on traveler tracks, allowing for customizable staging configurations. The theatre is used by nationally significant MANCC artists to share work-in-progress with students and community. Graduate students also have access to produce work in this space.

STUDIO SPACES



CARNAGHI ARTS BUILDING (CAB)

The Carnaghi Arts Building (CAB) accommodates studio space for several departments in the College of Fine Arts, including the Department of Art, the Department of Interior Architecture & Design, and the School of Theatre. This 114,000+ square foot space provides a unique and collaborative learning environment for students in all art disciplines.

CAB houses individual studios for the Department of Art's BFA and MFA students, where students can create and exhibit work while fostering community between programs. MFA students have access to labs supporting ceramics, wood, and metal work, and both BFAs and MFAs have access to the Light Box photography studio, computer labs, and reservable installation spaces. This building also contains two student gallery spaces, the MFA-run Working Method Contemporary and BFA-run Phyllis Straus Gallery, which host frequent exhibitions that are open to the public.



FACILITY FOR ARTS RESEARCH (FAR)

The Facility for Arts Research is home to the Florida State University College of Fine Arts Dean's Office staff. The building also offers space and specialized equipment for experimental printmaking, spatial audio, electronics and digital fabrication to researchers, faculty and students.

Several special faculty projects are housed at FAR, including the Small Craft Advisory Press (SCAP), which blends traditional and digital printmaking processes and promotes collaborations between artists and writers to create artists' books.

LIBRARIES

UNIVERSITY LIBRARIES

The Florida State University library system is a member of prestigious organizations such as the Association of Research Libraries (ARL) and the Center for Research Libraries (CRL). The libraries adhere to the standards set by the Southern Association of Schools and Colleges, ensuring high-quality resources for students and faculty. Recent efforts have addressed concerns and improved collections for departments like Art History, with positive feedback from departments like Art and Art Education. The Visual & Performing Arts Librarian, Leah Sherman, has been instrumental in supporting the College of Fine Arts with her expertise and service-oriented approach. FSU Libraries have prioritized expanding collections in visual arts and design, primarily focusing on printed materials to meet disciplinary needs. The library also maintains strong ties with Special Collections & Archives, acquiring original manuscripts and high-quality facsimiles for student and faculty researchers.

WILLIAM JOHNSTON BUILDING ART & DESIGN LIBRARY

The Art & Design Library in the William Johnston Building is primarily managed by the Art History department and serves as a quiet study space for its students. This 2,500-square-foot glass-walled library houses a collection of over 10,000 non-circulating books donated by College of Fine Arts faculty, students, and supporters. It also serves as a venue for department meetings and social events. Student assistants are currently reviewing and preparing the complete collection for inclusion in the FSU Libraries catalog, for easier access and on-site use.



ACADEMIC CALENDAR

The Academic Calendar holds essential information on how our academic year is structured, including key dates, deadlines, and holidays. Understanding the academic calendar is crucial for planning your studies, ensuring you meet important deadlines, and maximizing your academic experience.

Our academic year is divided into three main semesters: Fall, Spring, and Summer. Each semester has its own unique schedule, including start and end dates, registration periods, and exam periods.

We encourage you to familiarize yourself with these calendars and refer to them regularly to stay informed about important dates and events throughout the academic year. If you have any questions or need more assistance, please contact the Office of the Registrar.

TO VIEW THE FULL AND UPDATED CALENDARS FOR EACH SEMESTER, PLEASE CLICK ON THE FOLLOWING LINKS:

- [FALL SEMESTER CALENDAR](#)
- [SPRING SEMESTER CALENDAR](#)
- [SUMMER SEMESTER CALENDAR](#)



POLICIES & PROCEDURES

For comprehensive university-wide policies and procedures, please refer to the **FSU Student Handbook** and the FSU Undergraduate Bulletin for undergraduate students, or the **FSU Graduate Bulletin** for graduate students.

In this section, you will find a selection of the most relevant student policies that apply specifically to the College of Fine Arts. These policies were included to ensure you are aware of the expectations and guidelines that govern your academic and professional conduct within our college.

We encourage you to familiarize yourself with these policies and refer to them regularly. If you have any questions or need more clarification, please contact the Director of Student Services in the College of Fine Arts.

ACADEMIC PERFORMANCE EXPECTATIONS

All students must demonstrate satisfactory academic progress for retention and continued enrollment at Florida State University. Satisfactory academic progress includes, but is not limited to, successful completion of credit hours and progression toward completing a degree. The University reserves the right not to retain students who do not demonstrate satisfactory academic progress.

FIVE ACADEMIC STATUS CATEGORIES AT FSU

- 1 **GOOD STANDING**
- 2 **ACADEMIC PROBATION**
- 3 **ACADEMIC PROBATION CONTINUED**
- 4 **DISMISSED**
- 5 **DISMISSED, REINSTATED ON ACADEMIC PROBATION**

Statuses of “Academic Probation”, “Academic Probation Continued”, or “Dismissed, Reinstated on Academic Probation” do not specifically prohibit a student from participating in extracurricular activities unless otherwise specified by University policy, rules, or by-laws governing the activity or organization.

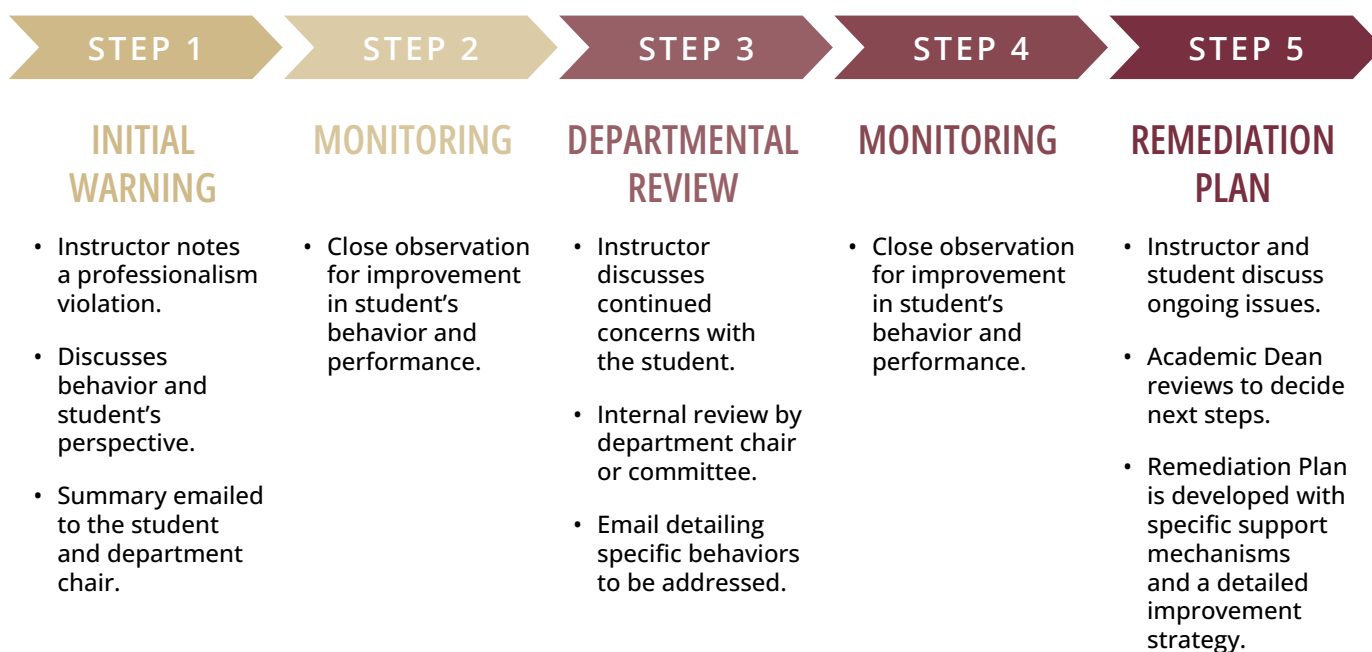
Undergraduate students are not eligible for conferral of a degree unless the cumulative grade point average (GPA) is at least 2.0 (“C”) or better. Students should maintain a minimum 2.0 GPA to remain in good standing with the University. Individual programs and departments may have other requirements, please refer to the policies of your departments for details. Students who have entered a university in the State of Florida with fewer than 60 hours of credit are required to earn at least nine hours by attendance in one or more summer terms at one of the State University System institutions. Students may request a waiver of this requirement through the Associate Dean for Academic Affairs prior to applying for graduation.

A graduate student is not eligible for conferral of a degree unless the cumulative grade point average is at least 3.0 (“B”) in formal graduate courses (5000-level or above). 4000-level courses may be credited toward a graduate degree but cannot count in a student’s minimum thirty total semester hours of graduate credit or graduate GPA. No course hours with a grade below “C-” will be credited on the graduate degree; all grades in graduate courses except those for which grades of “S” or “U” are given or those conferred under the provision for repeating a course will be included in computation of the average. Individual programs and departments may have other requirements, please refer to the policies of your departments for details.

PROFESSIONAL CONDUCT POLICY

This statement outlines the standards of professional conduct expected of students in the College of Fine Arts. These standards emphasize the importance of maintaining professional conduct and remaining in good academic standing with the University and the College. If a student's professional performance falls below minimum expectations, the faculty may issue a warning, place the student on probation with a remediation plan, or recommend dismissal from the program. Students in the College of Fine Arts must also adhere to the University Academic Honor Policy, Student Conduct Code, and Summons to Responsible Freedom.

Throughout each semester, faculty are constantly assessing how well you perform in each area of the CFA's Principles of Professional Conduct — Adaptability, Resourcefulness, Tenacity, Inquiry, Self-awareness, Teamwork – or A.R.T.I.S.T. for short (please note, these expectations stand alongside any expectations already in place by the units). These principles are supported by research on the habits of mind, which emphasizes the importance of critical thinking, problem-solving, and lifelong learning. If a concern about a student's professional conduct emerges, the process begins with an instructor issuing a warning via email and copying the department chair. A second violation involves a departmental review, potentially resulting in a formal notification outlining specific behaviors to address. A third violation may lead to the implementation of a remediation plan. Failure to meet the remediation plan's requirements could result in dismissal from the program. This process ensures a clear, escalating response to unprofessional behavior, providing multiple opportunities for you to correct your behavior with the support and guidance of faculty and administration.



CFA'S PRINCIPLES OF PROFESSIONAL CONDUCT

ADAPTABILITY

Adaptability is the ability to adjust to new conditions and embrace change. In the College of Fine Arts, this might look like students pivoting their approach when a project takes an unexpected turn or new challenges arise. For example, an adaptable student might incorporate new materials into a sculpture when the original materials are unavailable or adjust choreography to fit a different performance space. This flexibility allows for creative problem-solving and resilience in the face of unpredictability.

RESOURCEFULNESS

Resourcefulness is the ability to find quick ways to overcome difficulties. It involves taking independent responsibility, relying on yourself, and utilizing the resources around you to effectively problem-solve. In practice, resourceful students make the most of the materials, tools, and opportunities available to them. This can include utilizing library resources for research, seeking out additional learning experiences such as workshops or internships, or collaborating with peers to share skills and knowledge. For instance, a resourceful student might use found objects to create a piece of art when traditional materials are scarce or apply for grants and scholarships to fund a project.

TENACITY

Tenacity refers to the quality of being determined and persistent. Tenacious students persist through difficult or complex projects and experiences, maintaining focus and effort even when facing setbacks. This could mean revising an artwork multiple times until it meets a high standard or continuing to refine a research paper despite initial challenges. Their determination drives them to overcome obstacles and achieve their artistic goals, demonstrating resilience and a strong work ethic.

INQUIRY

Inquiry is a desire to learn and understand through questioning and exploration. Students who prioritize inquiry actively seek to deepen their understanding and expand their knowledge. They ask questions, engage in research, and explore various perspectives and contexts. For example, a student might explore archival materials related to historical art movements to inform their work or experiment with new mediums to enhance their practice. This curiosity and willingness to explore lead to a richer and more informed artistic expression.

SELF-AWARENESS

Self-awareness, including professionalism and ethical standards, is the ability to reflect on one's own actions and behaviors. Self-aware students reflect on their work and behavior, understanding their strengths and areas for improvement. They adhere to ethical standards, respect intellectual property, and maintain professionalism in interactions. For instance, a self-aware student gives and receives constructive feedback, recognizes the importance of deadlines, and respects the work of peers and mentors. This awareness ensures they act with integrity and responsibility in all their endeavors.

TEAMWORK

Teamwork is the combined action of a group, especially when effective and efficient. Effective teamwork involves collaboration, communication, and respect among peers. Students demonstrate teamwork by participating actively in group projects, contributing ideas in class, listening to others in discussions, and working towards common goals. This might be seen in a group exhibition where each member plays a vital role in the overall presentation or in a theatre production where cast and crew must collaborate to put together the final performance. Successful teamwork results in cohesive and innovative outcomes that reflect the strengths and contributions of all members.





ACADEMIC INTEGRITY POLICY

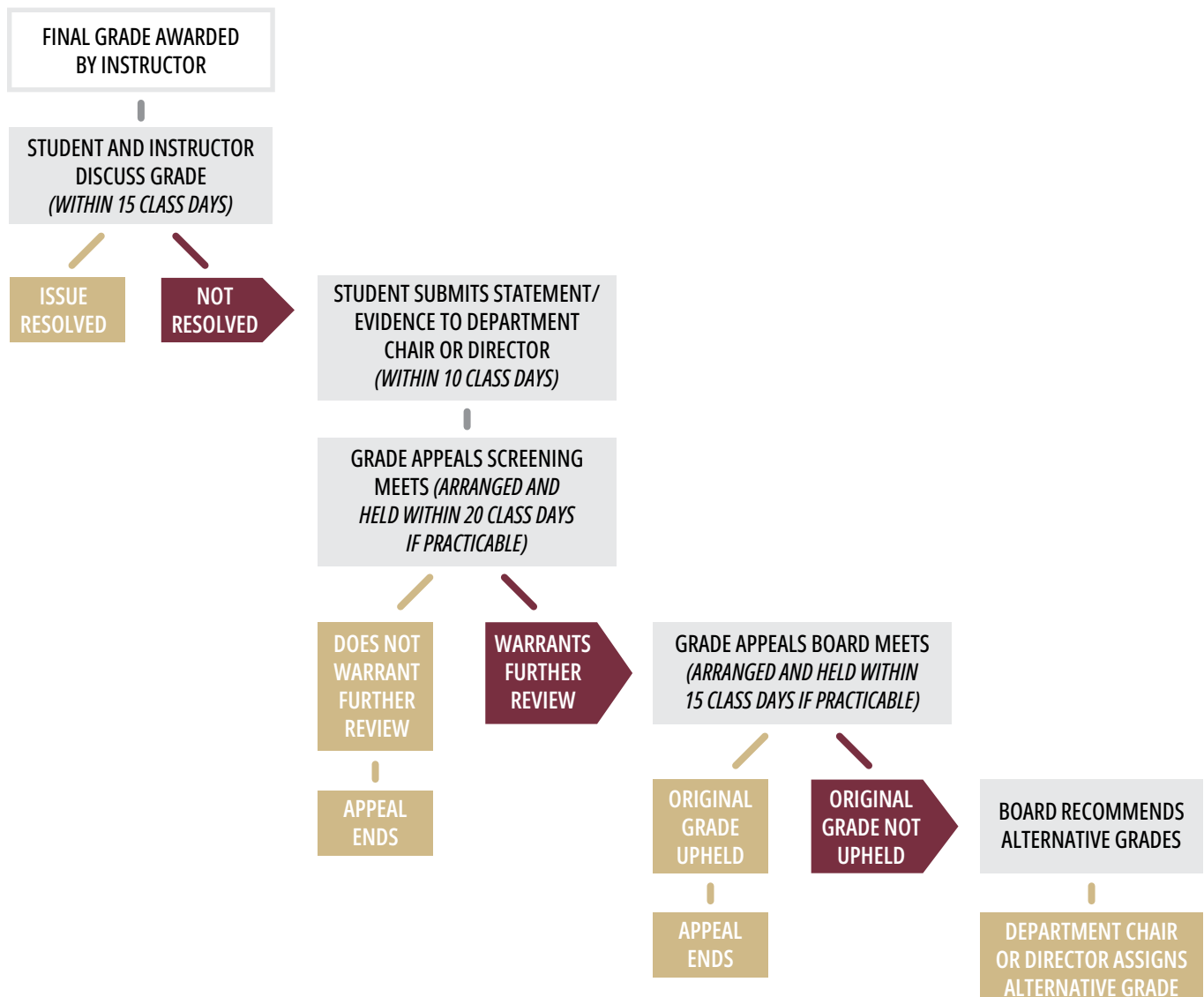
The Academic Honor Policy is an integral part of the FSU academic environment. The policy outlines the University's expectations for students' academic work, the procedures for resolving alleged violations of those expectations, and the rights and responsibilities of students and faculty throughout the process. New students are introduced to the Academic Honor Policy at Orientation and pledge to uphold it at New Student Convocation. If an instructor encounters academic dishonesty, they will follow the procedures detailed [here](#) to resolve the alleged violation in a timely manner while protecting the personal and educational rights of you, the student. To read details of the policy, please reference the corresponding FSU student handbook.

INCOMPLETE POLICY

Incomplete ("I") grades will only be recorded in exceptional cases if the student has completed a substantial portion of the course, is otherwise passing, but is unable to complete a well-defined portion of the course for reasons beyond their control. If the student finds themselves in these circumstances, they must petition the instructor and be prepared to present documentation that substantiates their case. Incomplete grades will not be granted to allow the student to do extra coursework in an effort to increase their grade. All incompletes will need to be documented using the incomplete form. For a comprehensive overview of policies related to Incomplete Grades and access to the form, please reference the [Grading System section](#) of the Undergraduate Bulletin chapter Academic Regulations and Procedures.

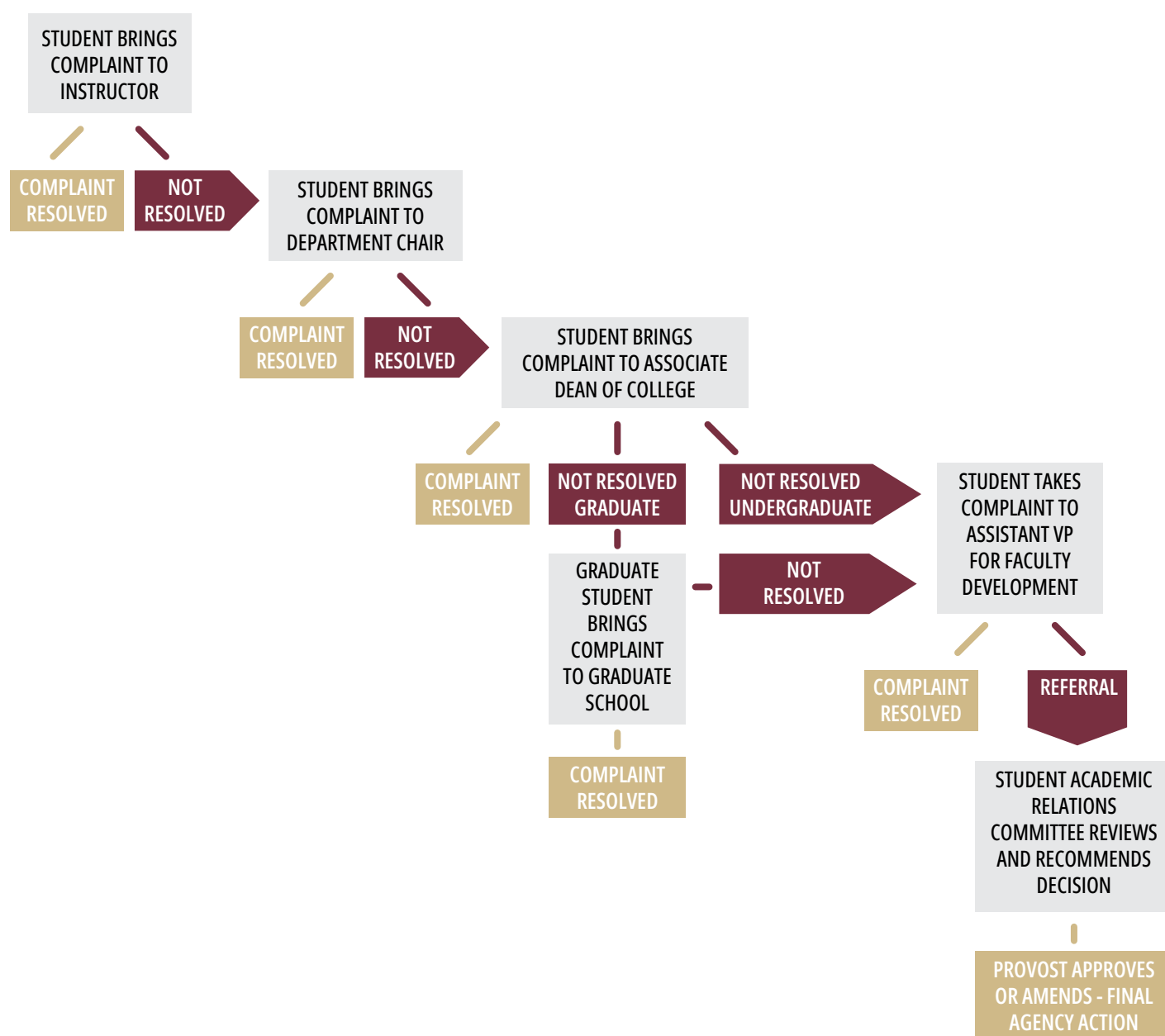
GRADE APPEAL PROCESS

The purpose of the grade appeals system is to afford an opportunity for an undergraduate or graduate student to appeal a final course grade under certain circumstances. Faculty judgment of students' academic performance is inherent in the grading process and hence will not be overturned except when you can show that the grade awarded represents a gross violation of the instructor's own specified evaluation (grading) statement and therefore was awarded in an arbitrary, capricious, or discriminatory manner. The evaluation (grading) statement used during the grade appeals process is the one in your instructor's syllabus at the beginning of the semester. For instructions on the process, please review the "Grade Appeals Flowchart" document. This system does not apply to preliminary or comprehensive exams or to thesis or dissertation defenses; these issues are reviewed by the Student Academic Relations Committee via the Office of Faculty Development and Advancement.



ACADEMIC GRIEVANCE PROCESS

Students who allege that academic regulations and procedures have been improperly applied in specific instances may have their grievances addressed through the general academic appeals process. In this process, you bring a complaint first to the instructor, then to the department chair, and finally to the academic dean appropriate to the course involved, stopping at the level at which the complaint is resolved. If no resolution is reached, you may bring the complaint to the attention of the Vice President for Faculty Development and Advancement for either resolution or referral to the Student Academic Relations Committee of the Faculty Senate. A graduate student whose complaint is unresolved must see the Dean of the Graduate School prior to meeting with the Vice President for Faculty Development and Advancement.



FSU REPORTING SYSTEMS

It's important to note that if you believe the situation is an emergency requiring immediate attention, you should first call FSUPD at (850) 644-1234.

Report.fsu.edu is a platform dedicated to facilitating the reporting of incidents or concerning behaviors within the Florida State University community. This site provides a user-friendly interface for submitting reports on various issues, including sexual misconduct, stalking, domestic/dating violence, ADA or accessibility issues, and more. To submit a report, simply hover over the button corresponding to the type of report you wish to submit and click (or tap on mobile devices) to proceed. Whether it's addressing online behavioral issues in Canvas, reporting acts of discrimination, or seeking assistance from the Victim Advocate Program, **report.fsu.edu** is an essential tool for ensuring the safety and well-being of the FSU community.





ADVISING & STUDENT SUPPORT SERVICES

ACADEMIC ADVISING & SUPPORT

UNDERGRADUATE

The Academic Center for Excellence, a part of the Division of Undergraduate Studies, is a university learning center dedicated to helping students develop study skills and success habits crucial in a large research university and valued by future employers. Located on the ground floor of the William Johnston Building, their services include tutoring, study rooms, personal academic consultations (PAC), workshops, study tools and tips, and STEM support. The center aims to teach, advise, tutor, and provide an academic environment that inspires students to excel and utilize all available resources for their academic success. To learn more about other academic support services, visit: <https://ace.fsu.edu/tutoring/additional-academic-support>.

In addition to ACE, the CFA's team of academic advisors is dedicated to helping you make informed decisions about selecting courses, choosing a major, and staying on track for graduation and beyond. Committed to your success, we offer a variety of programs, resources, and services to support your holistic journey as a student. It's important to meet with your academic advisor each semester to review your academic progress, plan for future terms, and discuss engagement opportunities and post-graduation goals. Topics you can discuss with your advisor include general education requirements, major and graduation requirements, course planning and selection, academic support, educational opportunities (such as education abroad, research, and internships), career and graduate school plans, and non-academic challenges. While no single advisor can provide expertise in all areas, every advisor can help direct you to the appropriate campus resources. Remember, it is ultimately your responsibility to stay up to date and on top of your college experience. To find an advisor in your program of interest, please use the [FSU Advisor Search page](#).

GRADUATE

The Graduate Student Resource Center houses valuable resources and information to support graduate student success. The Center is part of FSU's Quality Enhancement Plan dedicated to enhancing doctoral education. Beginning in late summer 2024, the Center will implement Research and Creativity Activity Grants, which will provide doctoral students the opportunity to attend and present research or creative works at regional, state, national, and international conferences or performance venues. In fall 2024, the Center will establish an annual resource fair and a workshop series to address professional development topics such as time management, writing skills, project planning and management, stress reduction strategies, professional speaking skills, and other topics we identified by surveying and speaking with doctoral students. To learn more and access resources, please visit: <https://provost.fsu.edu/gsrc>

In graduate school, the level of responsibility for the direction of education is much more in the hands of the student than at the undergraduate level. While undergraduate advising often focuses on meeting general education and major requirements, graduate advising is more specialized and tailored to individual academic and career goals. Graduate advising is overseen within academic departments and programs, requiring students to take the initiative in contacting the academic program specialist for their program, their program director, and/or their faculty advisor. This higher level of responsibility empowers graduate students to shape their academic journey, pursue specialized research interests, and take ownership of their professional development. To view contact information for departmental and program contacts including faculty program directors and graduate academic program coordinators, visit the [FSU Advisor Search page](#).

CAREER SERVICES

The Career Center at Florida State University is committed to providing comprehensive and innovative career and employment services to students and other university constituents. While administratively located in Student Affairs, the Career Center's impact extends across the university, influencing areas such as new student recruitment, employer and community relations, research, and alumni affairs. The center's vision is to be the preeminent model for designing and delivering career services, emphasizing inclusivity and innovation. Upholding values of inclusion, compassion, and respect, the Career Center's mission is to provide comprehensive career services, train career service practitioners, conduct life and career development research, and disseminate information about life and career services and issues. The Career Center plays a crucial role in caring for and improving human life through its dedication to supporting students in their career development journey. The Career Center is here to offer industry-specific Career Advising in academic colleges and departments. For more information about the career liaison for the CFA, please visit: <https://career.fsu.edu/about-us/career-liaisons>

UNDERGRADUATE

The Career Center at Florida State University offers a wealth of resources tailored to undergraduate students to support their career development. From custom, stackable pathways to navigate their FSU experience to resources for researching graduate programs and financing higher education, the Career Center provides tools for students to plan their future. Students can explore various work environments and strengthen their skills through part-time jobs, internships, co-ops, service learning, leadership roles, and research opportunities. The Career Center also offers career advising, life and career planning courses, and programs to gain experience outside the classroom. Students can perfect their resumes and cover letters using the Career Center's in-person and online resources, and they can access virtual services, events, programs, and resources for added convenience. To learn more about undergraduate resources, visit <https://career.fsu.edu/students/undergraduate-students>

GRADUATE

The Career Center is dedicated to providing high-quality career services and resources to support Florida State University graduate students. Recognizing that graduate students may have unique needs related to career planning both during and after graduate school, Career Center staff are equipped to offer tailored career guidance and support. Graduate students also have free access to Beyond Graduate School and Beyond the Professoriate, valuable resources to assist in career planning. Services available to graduate students include career advising, access to Doctoral Students CareerDocs, the NoleNetwork, ProfessioNole Mentors program, mock interviews (in-person, virtual, phone), on-campus interviewing opportunities, workshops, career fairs, and events, a professional development workshop series, access to the Career Center Library, and for doctoral students, the Quinncia AI Platform. These services are designed to assist graduate students in achieving their career goals, whether in academia or beyond. To learn more about graduate resources, visit <https://career.fsu.edu/students/graduate-students>

COUNSELING AND WELLNESS

COUNSELING AND PSYCHOLOGICAL SERVICES (CAPS)

Counseling and Psychological Services (CAPS) is committed to the holistic well-being of our students. They offer a range of services to support your mental health, including Telemental Health Services through Zoom, in-person counseling, and Telephonic Crisis Support. You can reach them at 850-644-TALK (8255) to speak with a clinician today. At CAPS, they understand that life can be challenging, no matter how educated or prepared you are. Their goal is to provide a welcoming and confidential space where you can seek help and support for a variety of mental health concerns. Their licensed and professionally-trained staff offer a range of services, including immediate triage, one-on-one counseling, couples counseling, group sessions, and 24/7 crisis intervention (850-644-TALK). These services are covered by student fees, so there is no out-of-pocket expense for any visit. In times of crisis, CAPS is here to help. They are located on the second floor of the Askew Student Life Center for in-person support. They offer resources for coping with stress and utilizing FSU's support services, including learning healthy thinking and coping strategies, discovering how family members can be supportive, and finding information about common reactions to stress.

UNIVERSITY HEALTH SERVICES (UHS)

University Health Services (UHS) is available to promote and improve the overall health and well-being of FSU students. Their vision is a healthy community where every student thrives. They honor the tenets of the Seminole Creed by emphasizing accountability, learning, excellence, collaboration, active communication, a safe and secure environment, and mutual respect. They are committed to ethical and professional practices, supporting the academic mission of the university, and providing progressive, high-quality services. Services available include general medical care, women's health services, allergy clinic, nutrition assessments, physical therapy, immunizations, laboratory, health promotion outreach services, HIV and sexually transmitted infection testing, and radiology. They provide basic outpatient family practice-type services. They also provide urgent care services (minor suturing, splinting, intravenous therapy) for acute injuries and illnesses that cannot wait for an appointment.



CAMPUS RECREATION

Though not the only options for recreation on campus, FSU has two state of the art facilities available for student use, the Leach and the Waterfront. The Bobby E. Leach Student Recreation Center is a 120,000 square foot fitness facility located right in the heart of campus. Users are required to present current, valid FSUCard to access the facility. FSU's Lakefront Park & Retreat Center is a 73-acre facility, with 10 active acres, located on beautiful Lake Bradford. The Lakefront Park is located 1/4 mile from the airport and four miles from the Florida State University main campus. In our unique natural setting you can enjoy canoeing, kayaking, paddleboarding, picnicking, swimming, sand volleyball, disc golf, and many other activities. Call the Leach Center at 850-644-0548 to catch one of their Rec Rides to and from the park. Available Saturdays and Sundays only.

Your physical and mental health is important to us, and we encourage you to take advantage of the resources and support available to you through Florida State University.

ACCESSIBILITY SERVICES

Florida State University is committed to providing quality education to all qualified students and does not discriminate on the basis of race, creed, color, sex, religion, national origin, age, disability, genetic information, veteran status, marital status, sexual orientation, gender identity, gender expression or any other legally protected group status. Providing services to more than 5000 students, the Office of Accessibility Services (OAS) is committed to ensuring universal access for each Florida State University student. The OAS creates an environment of success through the provision of academic, housing, and dining accommodations, testing support, assistive technologies, and space for students to feel they are part of the FSU community.

To apply for services, please visit: <https://dsst.fsu.edu/oas>

STUDENTS FIRST INFORMATION CENTER

The Students First Information Center provides a wealth of information on all aspects of the University, including registration, bulletins, counseling, computing, financial aid, and fees. This essential resource serves as a gateway to connect you to access your schedule, pay tuition, obtain an unofficial graduation check, check your financial aid status, view grades, request transcripts, and more.

STUDENT ORGANIZATIONS & ACTIVITIES

INTERIOR DESIGN STUDENT ORGANIZATION (IDSO)

FSU COLLEGE OF FINE ARTS COLLEGE LEADERSHIP COUNCIL (CLC)

ART SCENE ZINE (STUDENT PUBLICATION)

ARTS LEADERS AND MANAGERS (ALM)

STUDENT ART THERAPY ASSOCIATION AT FSU (SATA)

FSU CHAPTER – NATIONAL ART EDUCATION ASSOCIATION (FSU-NAEA)

ART HISTORY ASSOCIATION (AHA)

UNDERGRADUATE ART HISTORY ASSOCIATION (UAHA)


SCHOOL OF DANCE STUDENT ADVISORY COUNCIL (SAC)

FSU ART CENTER

ART STUDENTS LEAGUE (ASL)

 @studiohfsu

WHITE MOUSE PRODUCTIONS (STUDENT THEATRE)

 @whitemouseproductions


SIDE B SOCIETY (STUDENT THEATRE)

 @sidebsociety

STUDENT ART STUDIO FOR HEALING

 @studiohfsu

BLACK ACTING METHODS SOCIETY

 @bamsfsu

THE LEAGUE OF GRADUATE ARTISTS (LGA)

 @workingmethodcontemporary

FSU MUSEUM SOCIETY

 @museumsocietyfsu

ART SOCIETY AT FSU

 @fsuartsociety

PRINT CLUB FSU

 @printclubfsu

CLAY CLUB FSU

 @clayclubfsu

NOLE CENTRAL: With hundreds of Registered Student Organizations (RSO) at FSU; you can create community, foster creativity, engage in philanthropy, and find what inspires you. Learn more at Explore - Nole Central (fsu.edu)



GETTING STARTED AT FSU

- > ACTIVATE YOUR FSUID
- > GET YOUR FSU ID CARD
- > SIGN INTO MYFSU
- > DOWNLOAD THE MYFSU MOBILE APP
- > GET SET UP IN CANVAS
- > REVIEW POLICIES, ANNOUNCEMENTS, & REGISTRATION GUIDES
- > CONTACT YOUR ADVISOR PRIOR TO REGISTRATION
- > FIND OUT WHEN YOUR REGISTRATION WINDOW OPENS
- > REVIEW & ORDER REQUIRED MATERIALS
- > REVIEW UNIVERSITY & DEPARTMENTAL POLICIES & PROCEDURES
- > GET TO KNOW CAMPUS
- > LEARN ABOUT PARKING & TRANSPORTATION
- > GET INVOLVED ON CAMPUS
- > EXPLORE TALLAHASSEE



CONTACT US

FOR GENERAL QUESTIONS:

✉ CFA-CONTACT@FSU.EDU

FOR ADMISSIONS QUESTIONS:

✉ ADMISSIONS@CFA.FSU.EDU

FOR STUDENT QUESTIONS:

✉ STUDENTSUCCESS@CFA.FSU.EDU



COLLEGE OF
FINE ARTS